

SUNTREE TECHNOLOGIES

MODEL NO. NSBB 4-8-84

RECOMMENDED PIPE SIZES: 12" to 18"

FLOW, TREATMENT, & BYPASS SPECIFICATIONS FOR THE BIOMASS SEPARATING BASKET

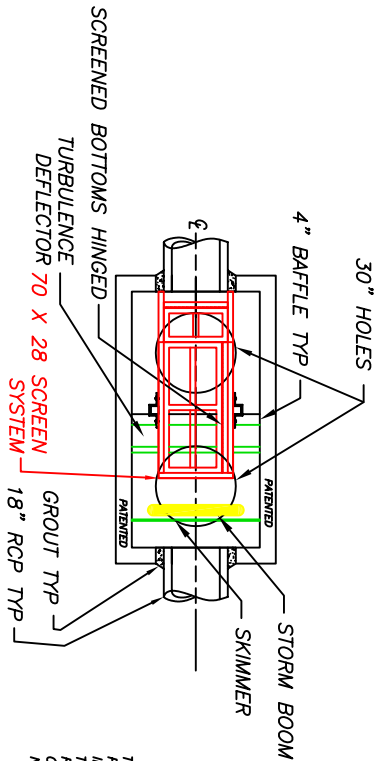
- 1. Inflow Pipe Area \_\_\_\_\_ 1.7 SQ.FT.
- 2. Open Orifice Area in Biomass Separating Basket \_\_\_\_\_ 19.0 SQ.FT.
- 3. Treatable Flow Area With No Blockage \_\_\_\_\_ 19.0 SQ.FT.
- 4. Treatable Flow Area With 50% Blockage \_\_\_\_\_ 9.5 SQ.FT.
- 5. Treatable Flow Area With 75% Blockage \_\_\_\_\_ 4.7 SQ.FT.

BASKET STORAGE = 20.5 CU. FT. (.76 CU YD.)

SEDIMENT STORAGE

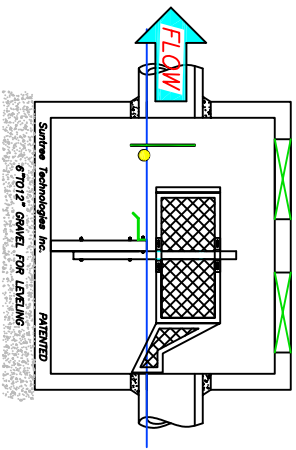
- Lower Front Chamber 46 CU. FT.
- Lower Rear Chamber 46 CU. FT.
- TOTAL 92 CU. FT. (3.4 CU YD.)

Suntree Technologies Inc.  
788 Overdale Road, Cocoa, Florida 32922  
PH: 321-437-7302 Fax: 321-437-7304

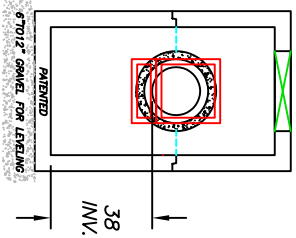


**PATENTED**  
AND PATENTS PENDING

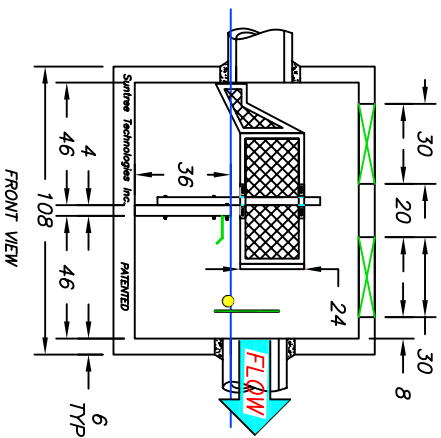
THE STRUCTURE IN THIS DRAWING IS PRIMARILY INTENDED TO BE INSTALLED IN OFF ROAD LOCATIONS WITH LESS THAN 5' OF COVER. STRUCTURES ARE NOT NECESSARILY AVAILABLE FOR ALL OTHER CONDITIONS. CONSULT SUNTREE TECHNOLOGIES REPRESENTATIVE FOR DETAILS.



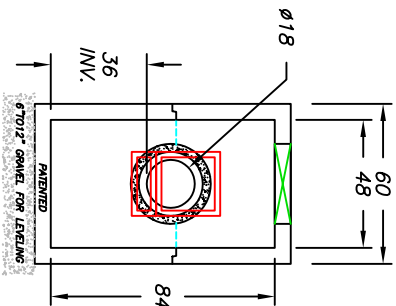
REAR VIEW



LEFT END VIEW



FRONT VIEW



RIGHT END VIEW

NOTES:

- 1. CONCRETE 28 DAY COMPRESSIVE STRENGTH  $f_c=5,000$  PSI.
- 2. REINFORCING: ASTM A-615, GRADE 60.
- 3. SUPPORTS AN H2O LOADING AS INDICATED BY ASHTO.
- 4. JOINT SEALANT: BUTYL RUBBER SS-S-00210
- 5. ALL WALLS, TOP + BOTTOM ARE 6" THICK.

PEAK DESIGN FLOW

16 C.F.S.

TREATMENT DESIGN FLOW

8 C.F.S.

SUNTREE TECHNOLOGIES INC. 98 CLEARLAKE RD 32922 COCOA, FL 32922		PROJECT: SUNTREE TECHNOLOGIES SPEC.	
MODEL NO. NSBB 4-8-84		REVISION:	DATE:
SCALE: SF = 72		REVISION:	DATE:
DATE: 03/25/05		REVISION:	DATE:
DRAFTER: N.R.B. UNITS = INCHES		REVISION:	DATE: