

# TRM Hits Hole-In-One Protecting Golf Course Irrigation Ponds



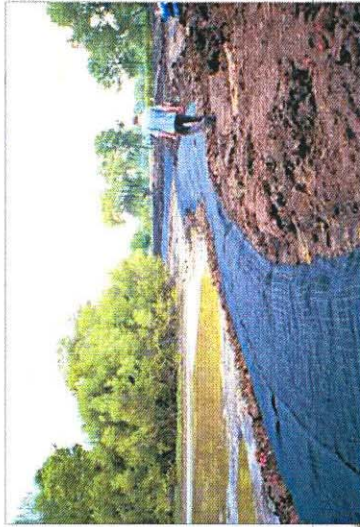
Chicago suburb Glen Ellyn was recently voted the second-most beautiful community in the nation by America in Bloom, and area residents take the beauty and environmental security of their village very seriously. When erosion threatened the banks of the village-owned Village Links Golf Course's irrigation ponds, officials sought an environmentally friendly and aesthetically pleasing solution. Course designers Gill Miller, Inc., researched their options and discovered that Landlok® TRM 1051, a turf reinforcement mat (TRM) from SI Geosolutions, was the perfect remedy.

As a flexible three-dimensional turf reinforcement system, Landlok TRM 1051 enhances the natural ability of plants to protect soil from erosion and improve water quality. It provides a permanent erosion control solution on slopes and in channels where desired performance exceeds the limits of natural vegetation. Landlok TRM 1051 also helps accelerate vegetative establishment and then anchors the mature plants to the soil, and its geotextile backing helps prevent fine soils from migrating during fluctuations in water levels.

Wadsworth Golf Construction installed approximately 15,000 square yards of Landlok TRM 1051 with an anchor trench at the bottom and top of the banks. Two rolls were placed horizontally for stabilization, and the TRM was secured with 8-inch U-shaped staples. The installation was then soil-filled and seeded. This type of installation allows the vegetation roots to grow down into the mat, providing root reinforcement rather than stem reinforcement.

Gill Miller, Inc., was so pleased with the Village Links project that they continue to specify Landlok TRM 1051 on similar golf course projects. In addition to the aesthetic benefits enjoyed daily by area golfers, Landlok TRM 1051 has offered the course owners installed cost savings and improved water quality that can't be matched by riprap and other hard armor alternatives.

In addition to saving the owner 30 to 50 percent over riprap, the before, during, and after installation photos show what a positive environmental and aesthetic impact Landlok® TRM 1051 had on the erosion problem along these golf course irrigation ponds.



## PROJECT FILE

Project	Village Links Golf Course
Location	Glen Ellyn, Illinois
Product	Landlok® TRM 1051
Application	Bank Protection
Designer	Gill Miller, Inc. ( <a href="http://www.gillmiller.com">www.gillmiller.com</a> )
Installer	Wadsworth Golf Construction
Date	Summer 2003



4019 Industry Drive • Chattanooga, TN 37416  
 (423) 899-0444 • (800) FIX-SOIL  
 FAX (423) 899-7619 • [www.fixsoil.com](http://www.fixsoil.com)

©2003 SI Corporation Printed in USA  
 GPD-PS-112 1003