



StormBasin

DownSpout Filter

Modular Stormwater Filtration System

Maintenance Guide

Caution

Do not step, stand, sit or in any way use the DownSpout device to support your weight during the maintenance procedure.

DownSpout Maintenance Guide

The DownSpout filter like any other storm water remediation device requires maintenance to remain efficient as a storm water filter. Fabco Industries highly recommends inspecting the perspective roof drainage system before installing a DownSpout unit and thoroughly cleaning it if necessary.



Cleaning Frequency

After installation the DownSpout filter requires periodic cleaning. There are no hard and fast rules in this regard. Small units and installation sites with higher than expected sediment loads or areas with significant trees and foliage require more maintenance. In general, Fabco Industries recommends cleaning out the unit(s) a minimum once per year by removing the debris, sand and silt.

Cleaning out the DownSpout Filter: 2 Cartridge, above ground installation

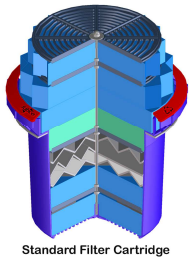
<p>Do not lift, disconnect or otherwise remove the DownSpout filter from the down spout pipes. Be sure to follow proper road safety rules & regulations when working in streets, alleys or parking areas.</p> <p>Begin by opening the access door to reveal the filtering chamber.</p> <p>CAUTION: The access door is heavy. Lift up on the latch and allow the door to rotate outwardly until it settles on the rubber stop on the side of the cabinet.</p> <p>CAUTION: Do not step, stand, sit or in any way use the DownSpout device to support your weight during the maintenance procedure</p>	A photograph showing the green DownSpout filter unit with its access door open. The door is hinged on the right side and is currently open, revealing the interior filtering chamber. The unit is installed outdoors next to a brick wall.
<p>With the access door opened the DownSpout filter is available for cleaning.</p> <p>Remove the sediment and debris from behind the trash screen as well as any that has collected around the cartridges. This can be done manually or with a vacuum device. Be sure you are wearing gloves, safety glasses and that traffic safety procedures are observed.</p>	A close-up photograph of the interior of the filtering chamber. It shows two circular filter cartridges mounted on a metal frame. There is some debris and sediment visible around the cartridges.
<p>With the debris and sediment removed the filter cartridges can be serviced. We suggest removing the cartridges from the DownSpout filter and removing any loose debris, sediment and trash from the upper foam pre-filter. (See: Removing the Filter Cartridge). Cartridge replacement is recommended annually.</p>	A photograph of a circular foam pre-filter. It is a dark, porous material with a red plastic rim. It appears to be covered in some debris and sediment.
<p>With the filter cartridges removed, the lower effluent chamber (below the filter chamber) can be inspected and cleaned if necessary. Cleaning this chamber can be done through the cartridge openings with a vacuum device. Reinstall the cartridges to complete the maintenance process. Close the access door and turn the latch to lock</p>	A photograph of the lower effluent chamber. It is a circular metal chamber with a dark, possibly rusty, interior. A metal rod or pipe is visible extending into the chamber.

DownSpout Maintenance Guide

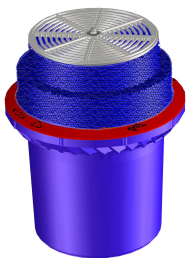
Selecting, Removing and Installing the StormBasin Cartridges

The Fabco filter cartridges used in the DownSpout product are designed primarily to capture: floating materials, sediments and dissolved heavy metals. Other pollutants can be addressed using various available cartridges. Before ordering your cartridges make sure you select the correct type. Each cartridge type can be identified by a colored “Ring” located at the top of the cartridge.

Selecting the right cartridge(s)



Part Number	Effectiveness	Ring color code
9718-1	Standard Cartridge Good All-purpose cartridge for common surface runoff that may contain a little bit of everything.	Red
9718-2	Pathogens Cartridge 2x's more pathogen treatment Vs. Std Cartridge. Use near sensitive water ways to keep beaches and shell fishing areas open.	Yellow
9718-3	HV Hydrocarbon Cartridge 25% more hydrocarbon filter media Vs Std cartridge. Excellent for vehicle or maintenance related applications.	Blue
9718-4	STD: HV Metals Cartridge Uses unique FABLITE filter media for HV metals. Suggested for industrial usage where persistent HV metals have been identified in surface runoff	Grey
9718-5	Standard short Cartridge Reduced height version of std Cart.	Mint
9718-6	Nutrients Cartridge Uses proprietary FABPHOS media for nutrients. Highly effective on the critical dissolved Ortho-Phosphates. Helps reduce algae blooms keeping the water clean and healthy.	Green



DownSpout Maintenance Guide

Referring to the pollutant concentrations stated in the NYS stormwater design manual, the standard HV metals cartridge should be expected to last about 1 year. Fabco's special short cartridge should be replaced twice per year.

Removing the Filter Cartridge(s)

With all debris removed from the DownSpout the filter cartridge(s) will be exposed at the bottom. To remove the cartridge(s) reach down into the basin and firmly grasp the plastic outer rim of the cartridge body just below the foam. Twist the cartridge body Counter-Clock-wise about $\frac{1}{4}$ turn until it stops. Lift the cartridge straight up to remove.



Installing new Filter Cartridge(s)

The DownSpout filter cartridge(s) install through a hole in the bottom of the filter chamber. The hole has four (4) slots that accept 4 tabs molded into the underside of the cartridge body.



Insert the DownSpout cartridge down through the hole in the base of the chamber. The colored ring on the cartridge should be facing upwards. Push the cartridge all the way through the hole until it rests on the bottom. Slowly turn the cartridge in a Clock-wise direction until the Tabs align with the slots and the cartridge body drops about $\frac{1}{4}$ ' further down.



Once the Tabs fall through the slots, continue turning firmly in a Clock-wise direction until the Tabs contact the STOPS. The Cartridge is now installed.

